

IN THIS ISSUE

1 President's Message

2 Week at a Glance

Quarter Scale Tractor

3 SESS Movember
Fundraiser

Envivil Pubcrawl

IEEE Meme

Steel Bridge Design Team

4 Civil has memes now

Sudoku

Rebus Puzzles

the Eng Info



NOVEMBER 6TH

President's Message

Hello Everybody,

We've got a slow week leading up to reading week. Here's what's going on:

SESS Annual General Meeting

FREE PIZZA. Good, now that I have your attention, the SESS AGM will be held on Tuesday November 7th at 7pm in room 1B71 and is open to all SESS members who want to learn more about how the SESS and how it runs, or members who just want some free pizza. The agenda for the AGM was emailed to all SESS members on November 1st, and it includes updates from all executive members. Come to the SESS office if you have any questions.

And a joke:

Q: What did the lion say to his cub that was walking to slow?

A: Mufasa

Robert Ashton
SESS President

president@sess.usask.ca

Week at a Glance

Mon	Tue	Wed	Thu	Fri
Civil Spring Roll Sale Steel Bridge Design Meeting		CHESS Perogie Sale	IEEE Pizza Sale	Envivil Pubcrawl

Quarter Scale Tractor

The University of Saskatchewan Sled Dogs 1/4 Scale Tractor team is a student run design team based out of the College of Engineering open to students from all disciplines and all colleges across campus.

The Sled Dogs are have got the ball rolling in the design process and teams have been made to tackle tasks similar to how a company would. They are closing in on more complete designs and, as the end of the month comes around, will have the design completed so the building of the tractor can start at the beginning of the new term. Currently there is a lot of hands-on work being done on testing of the 2017 tractor to help with design changes that may need to be made for the 2018 tractor.

The team has had a few projects on the go including the Tractor-Que (a drivable tractor with a barbeque mounted on it for optimal convenience), and a plow attachment for an older tractor to clear snow if the team needs room for testing. The tractor-Que will be used for promotional events put on by the team to try to get people interested in the team – it's never to late to join! The Sled Dogs are always looking for more help and are willing to take on new members at any time of the year.

If you have any questions, stop by room 1A25 in the Hardy Lab or email quarterscale.usask@gmail.com.





Do you want to grow a cool moustache and raise money doing it? You're in luck because November just started and the SESS wants you to participate this year for Movember! Sign up on the Movember Foundation website under the SESS's Moosetache Team at moteam.co/moosetache

Our goal this year is to raise \$200 and with your participation and donations we know we can do it!



the envivil pub crawl

me

a responsible and sober reading week with the fam

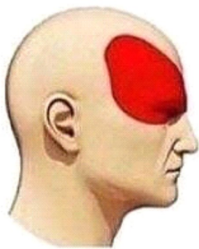
November 10
Tickets: \$15



feat. the Branch, Crazy Cactus, Twisted Tartan, & the Hose

Types of headache

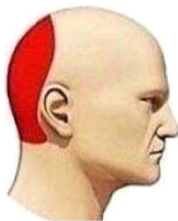
MIGRAINE



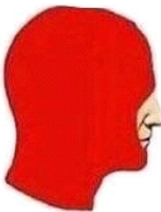
STRESS



HYPERTENSION



Perogies are better than pizza



Get rid of the headache, buy IEEE Pizza.

Thursdays 11:15am-1:30pm, in front of 2C02.

\$2.50/slice, \$5/2 slices + pop



Looking to join a new club on campus?

Interested in the process of bridge design?

Come to our weekly meetings! Everyone is welcome.

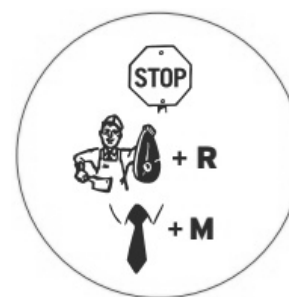
Meetings: Mondays @ 7pm, Room 1A88

Facebook: facebook.com/Steelbridgedesignteam

Website: usask.ca/groups/steel-bridge-design

For more info, contact us at:

general.steelbridge@usask.ca, (306) 491 -7499



	4		6			5
1			2			
			4	3		7
				4	3	6
		7		9	8	
2	6	1	8			
5			1	9		
				6		4
6			4		1	

Thanks for reading!

If you have any questions or comments about the Eng Info, or would like to submit to the Fo, please contact the editor:

Gillian Leach

vp.communications@sess.usask.ca

The Eng Info is brought to you by the Saskatoon Engineering Students' Society

